

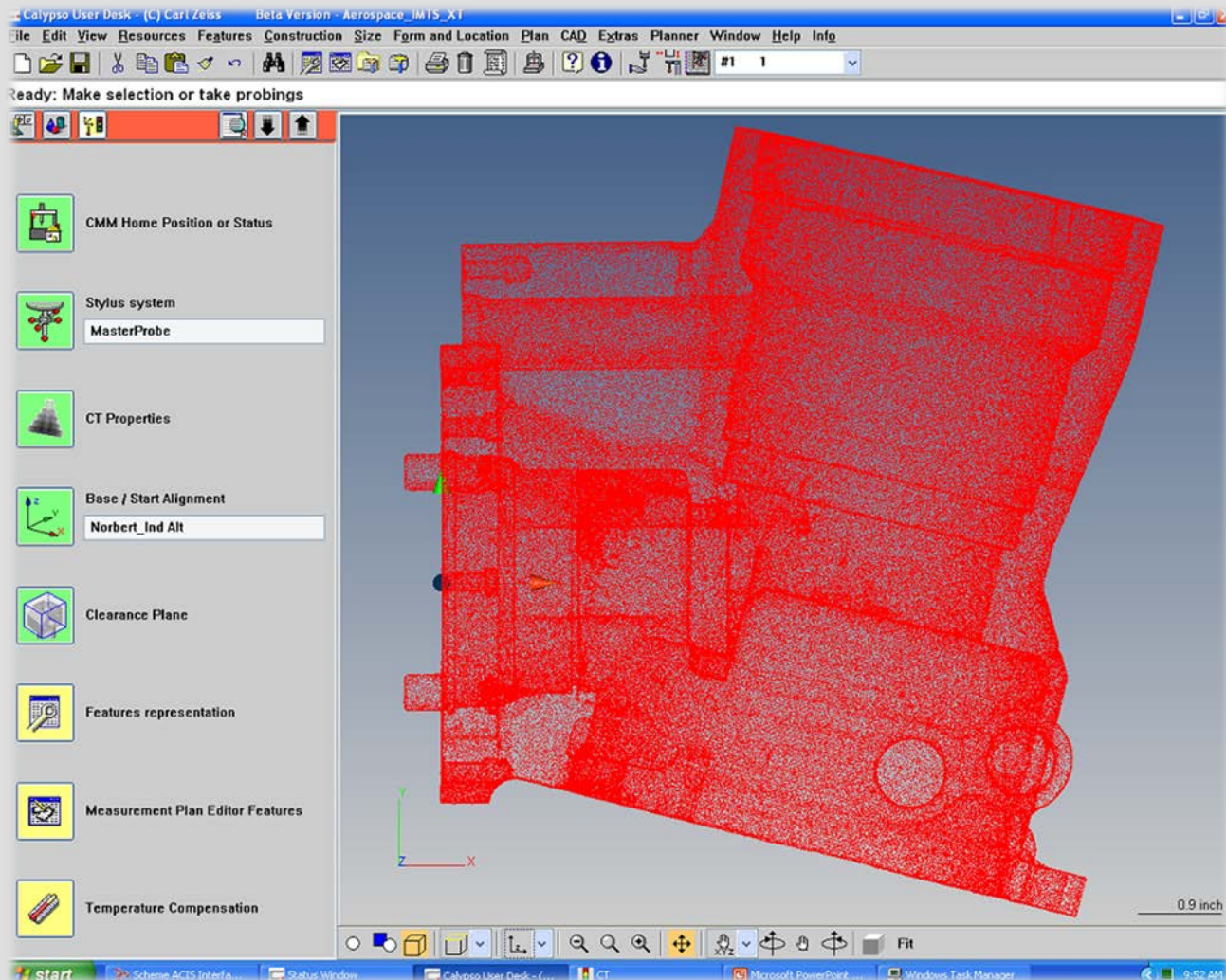
CT Data Analysis



Using Zeiss Metrotom CT-CMM

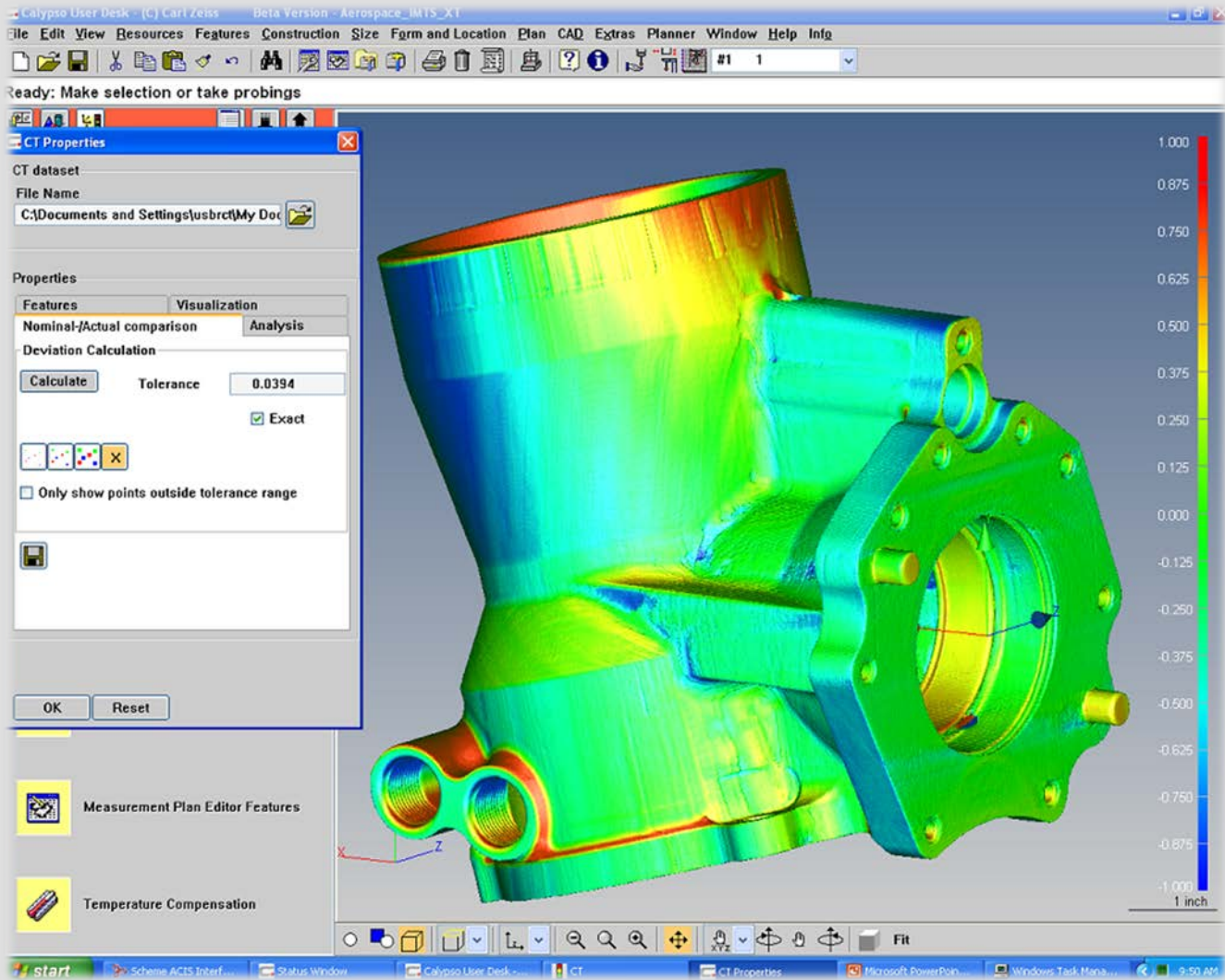
Metrotom

Part to CAD Surface Report: Step 1 - Import Voxel Data



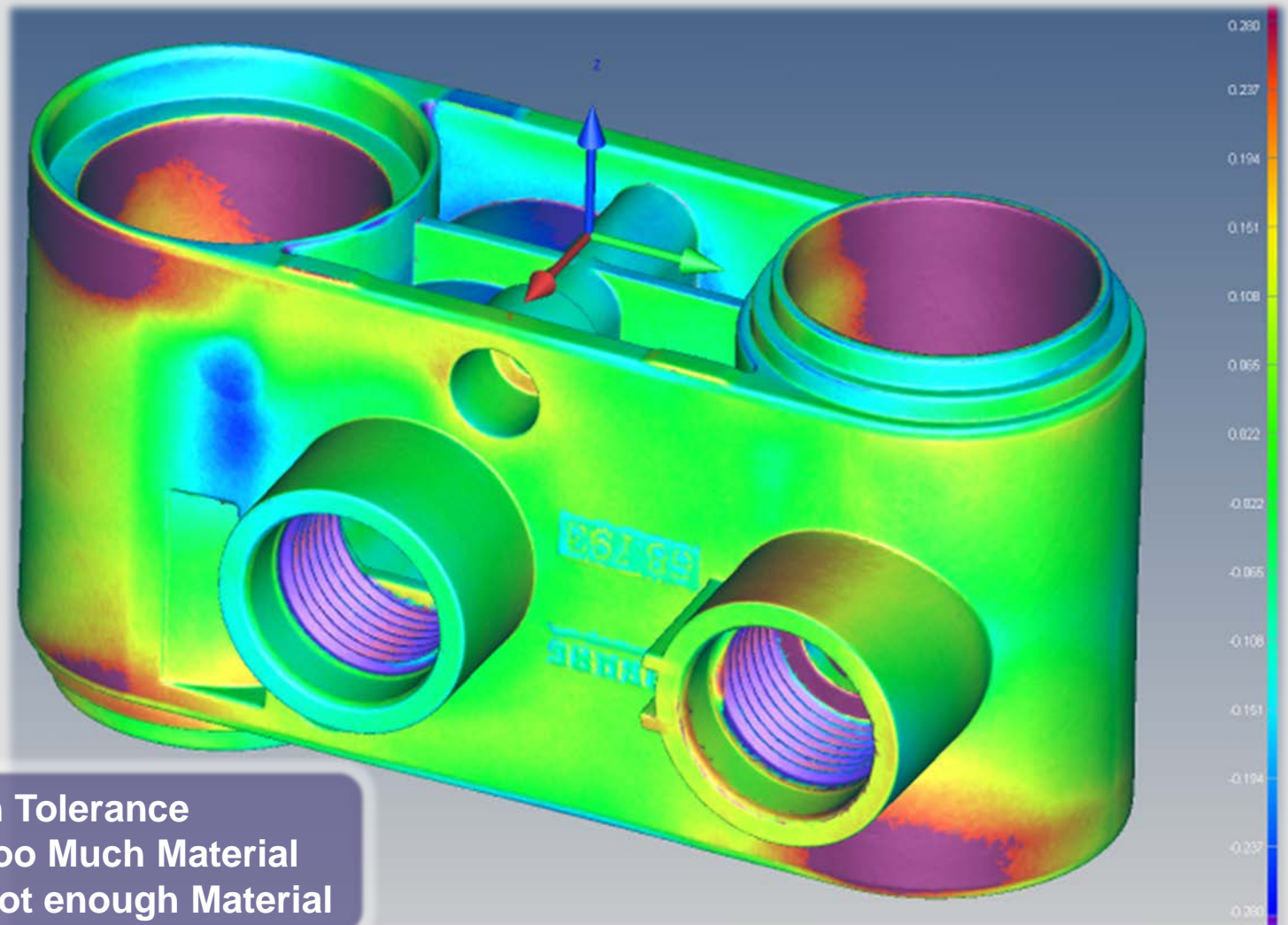
Metrotom

Part to CAD Surface Report: Step 5 – Generate Error Map



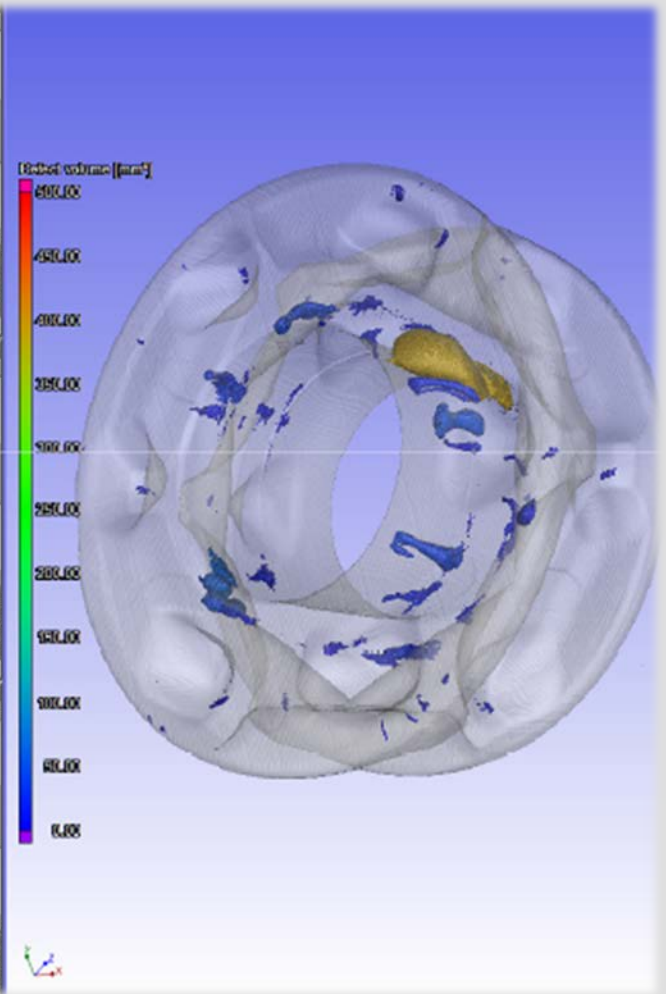
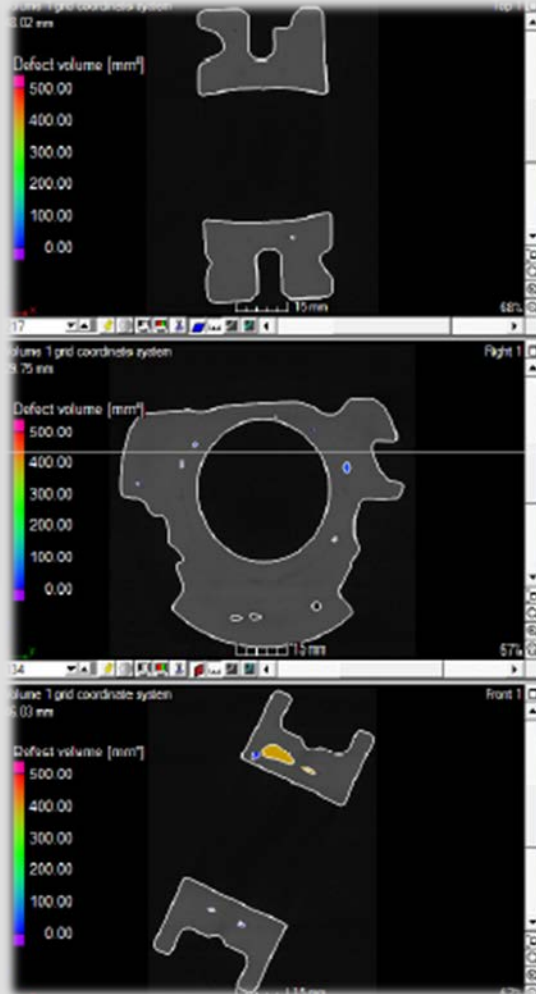
Metrotom

Part to CAD Surface Report: Housing



Metrotom

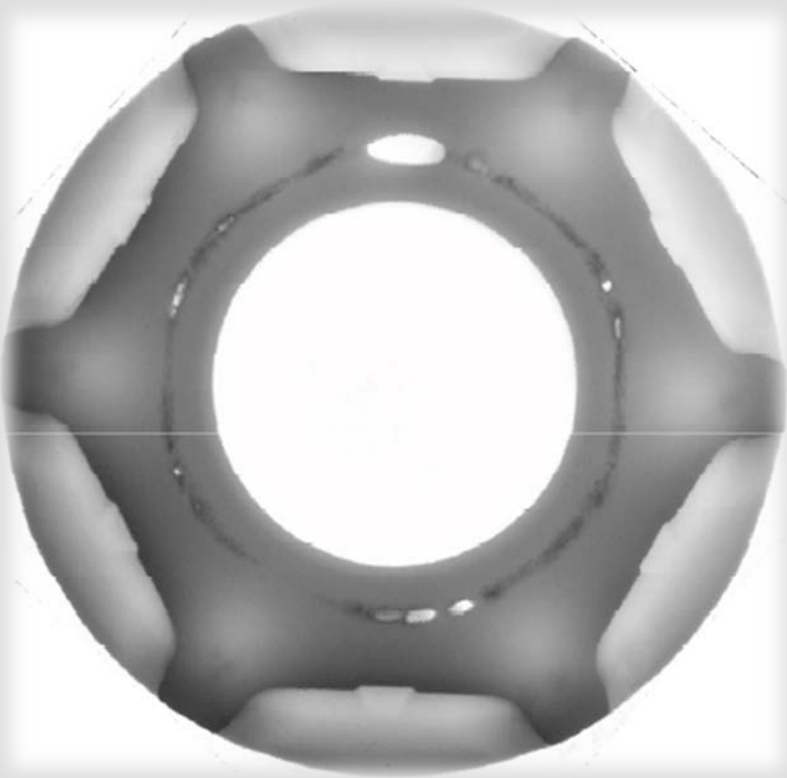
Void Report: Size, Volume and location of air pockets



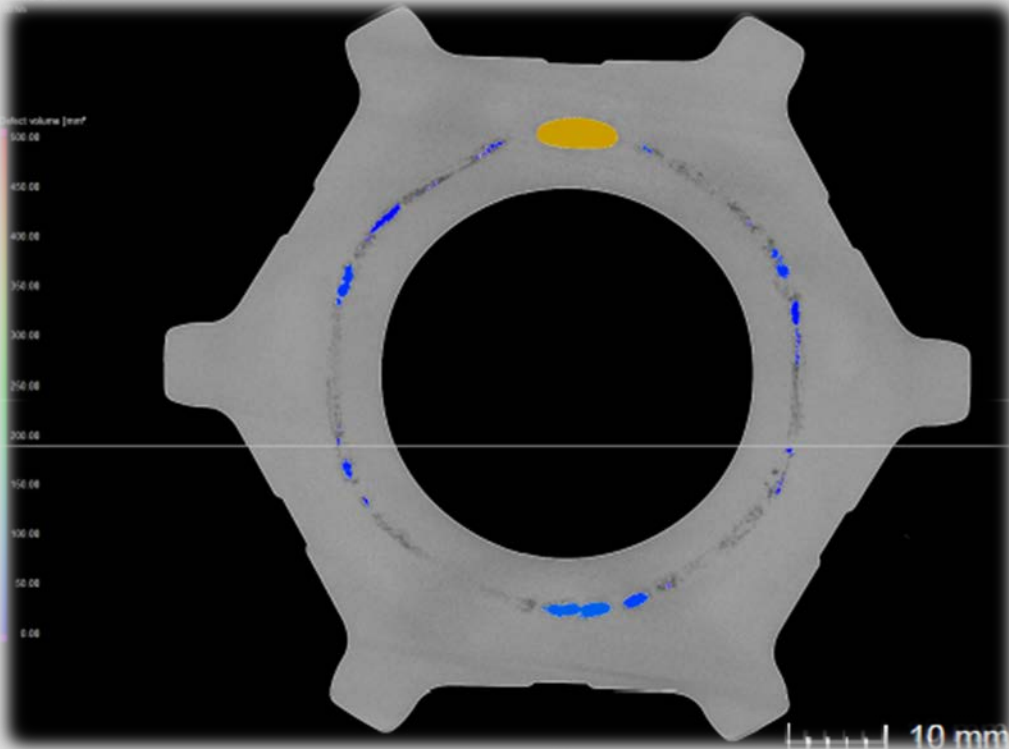
Comparison between a Polished Section and an Intersection through the CT Model



Microscopy Image of the Polished Section
(Destructive Testing)

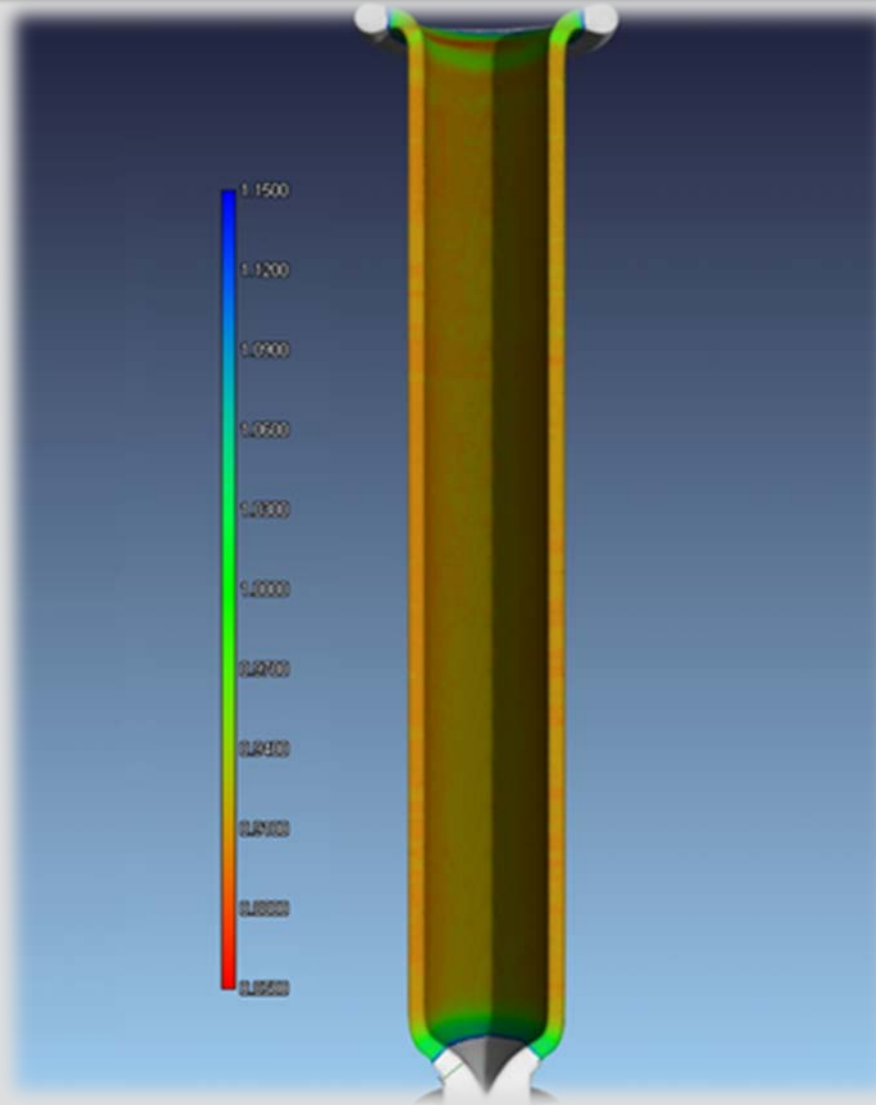


CT:
(Non-Destructive Testing)



Metrotom

Wall Thickness Report: Syringe



The most complex validation jobs are easily managed ...in a fraction of the time of using conventional tools

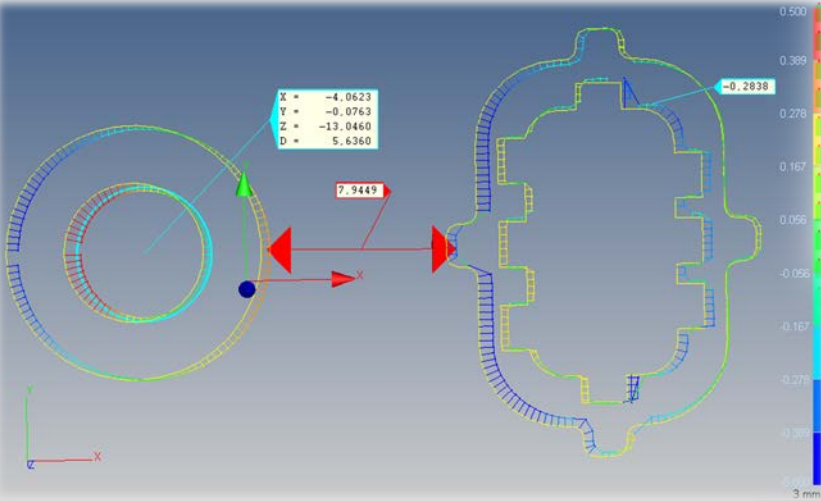
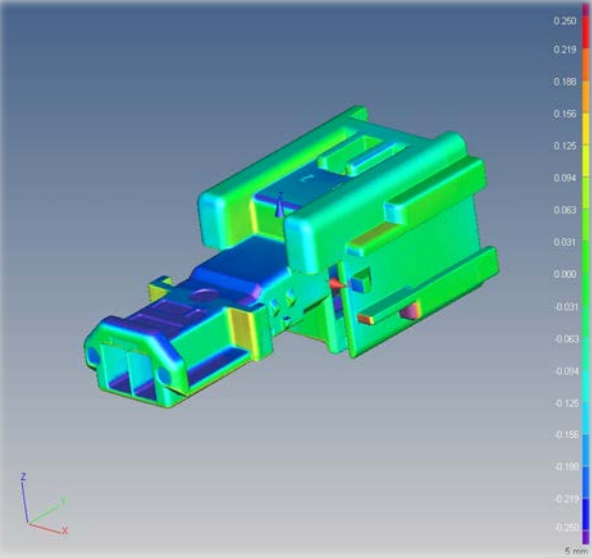


CALYPSO.



Plan Name 80527	Date December 5
Drawing No.	Time 10:42:08 am
Operator Master	Revision Date

Run
All Characteristics



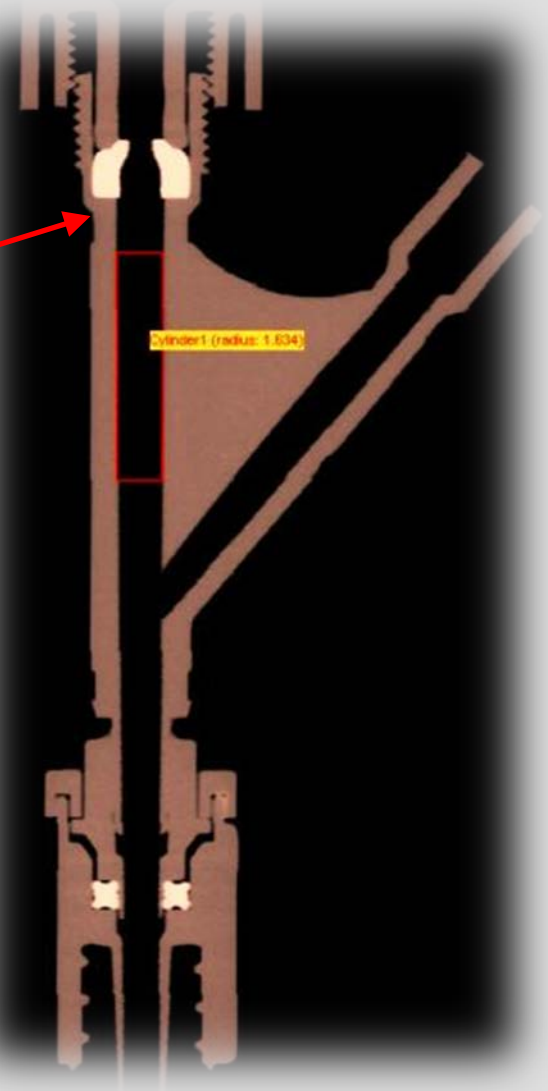
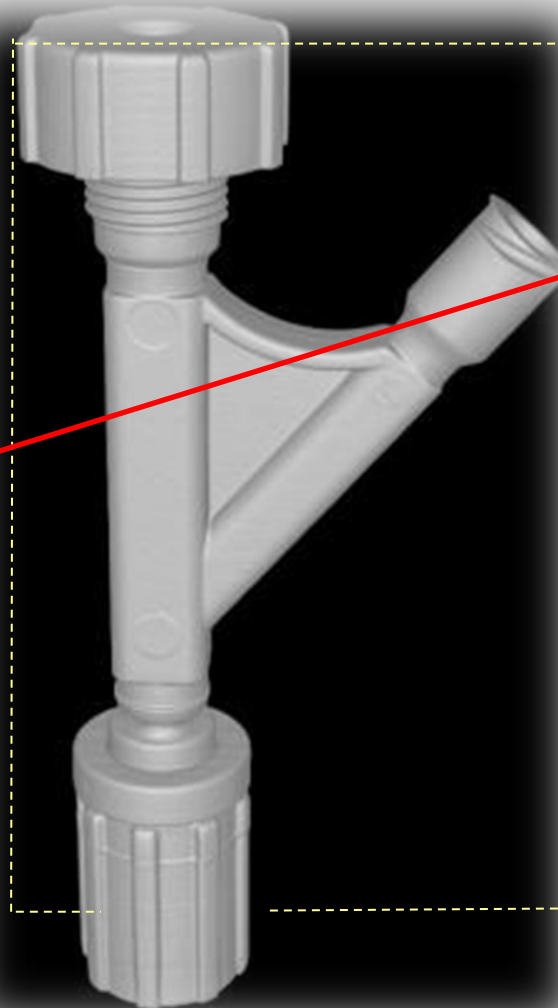
Name	Actual	Nominal	pos Tol	neg Tol	Diff	<- ->
1FF 03 Dimension Section F-F	12.541	12.400	0.100	-0.150	0.141	0.041
1FF 17 Dimension 1 Section F-F	6.557	6.700	0.000	-0.200	-0.143	-
1FF 17 Dimension 2 Section F-F	6.685	6.700	0.000	-0.200	-0.015	-
1L 22 Dimension View L	10.270	10.200	0.200	0.000	0.070	-
1EE 16 Dimension Section E-E	41.045	41.000	0.100	-0.200	0.045	-
2EE 18 Dimension Section E-E	10.387	10.200	0.050	-0.050	0.187	0.137
1EE 27 Dimension Section E-E(1)	2.264	2.300	0.000	-0.100	-0.036	-
1EE 27 Dimension Section E-E(2)	2.257	2.300	0.000	-0.100	-0.043	-
RS1-RSD-98822-001 1	1.533	1.600	0.000	-0.100	-0.067	-
RS1-RSD-98822-001 2	1.541	1.600	0.000	-0.100	-0.059	-
RS2-RSD-98822-001 1 1	0.591	0.500	0.100	0.000	0.091	-
RS2-RSD-98822-001 1 2	0.598	0.500	0.100	0.000	0.098	-
RS2-RSD-98822-001 2 1	0.552	0.500	0.100	0.000	0.052	-
RS2-RSD-98822-001 2 2	0.551	0.500	0.100	0.000	0.051	
RS3-RSD-98822-001	41.045	41.000	0.100	-0.200	0.045	-
RS4-RSD-98822-001 1	19.362	19.500	0.000	-0.200	-0.138	-
RS4-RSD-98822-001 2	19.326	19.500	0.000	-0.200	-0.174	-
RS5-RSD-98822-001	0.816	0.800	0.200	0.000	0.016	-
RS6-RSD-98822-001 1	0.849	0.800	0.100	0.000	0.049	

Metrotom

Assembly Analysis: Seal Validation

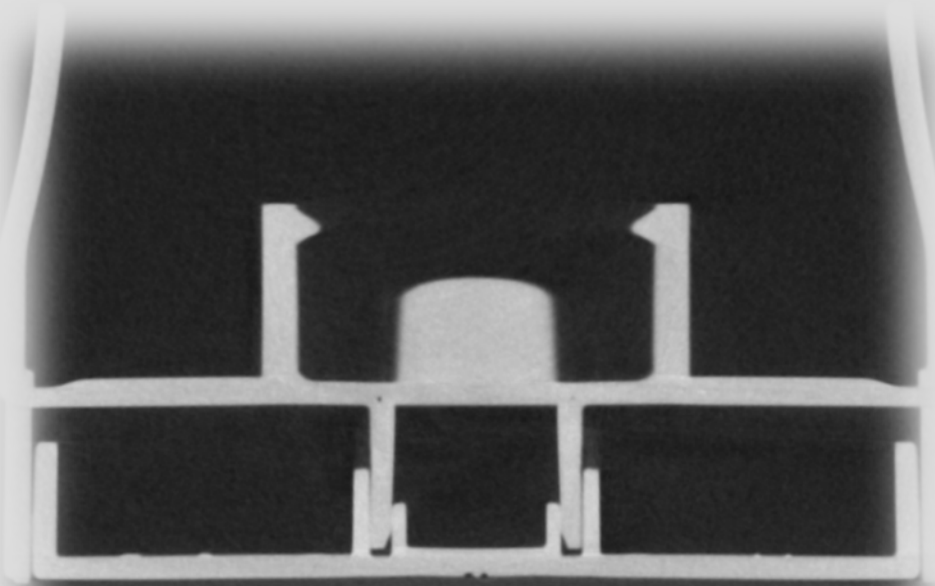


1. An infinite number of 2-D cross sections can be cut from the 3-D part data.
2. Different materials show up as different colors (note how cap compresses rubber seal)
3. Data can be used to confirm assembly fits.
4. Data can also be used to check internal characteristics.

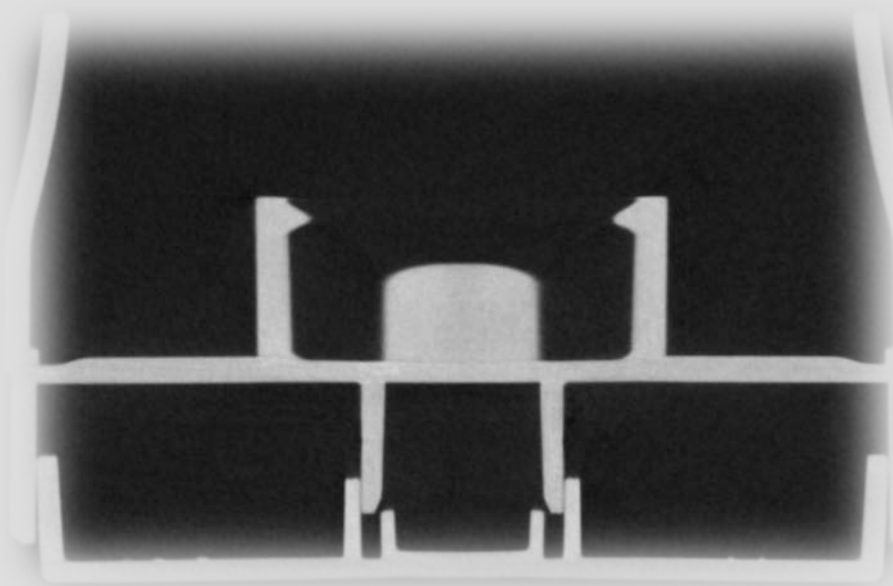


Metrotom

Assembly Analysis – Operational Conditions



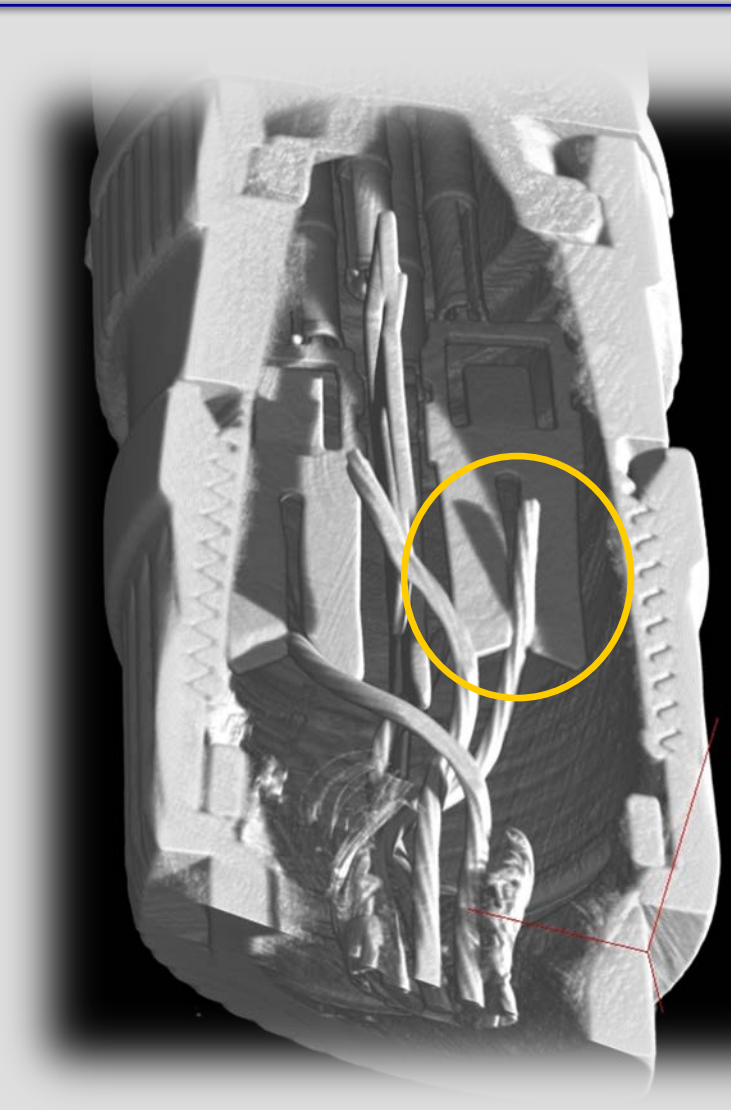
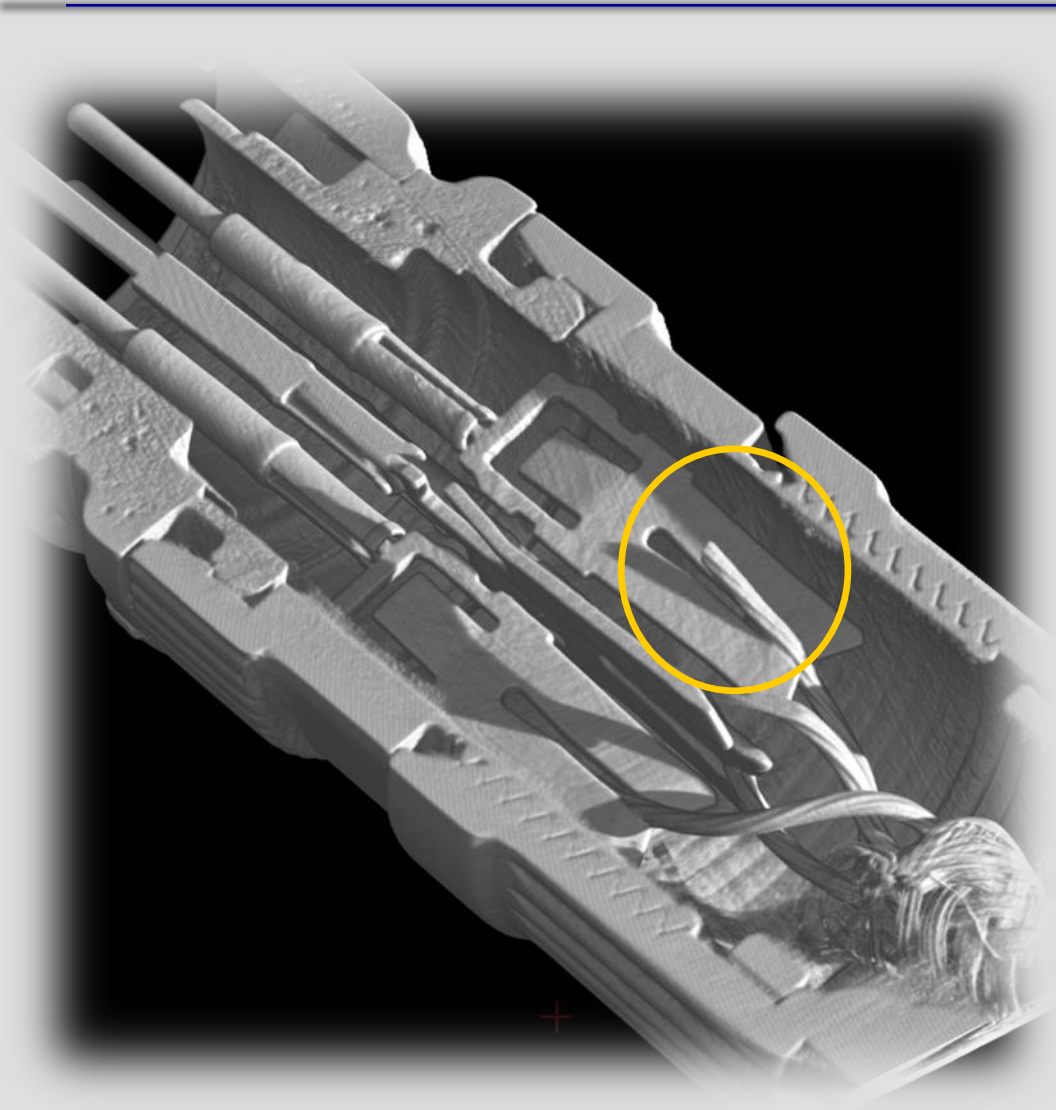
Closed



Open

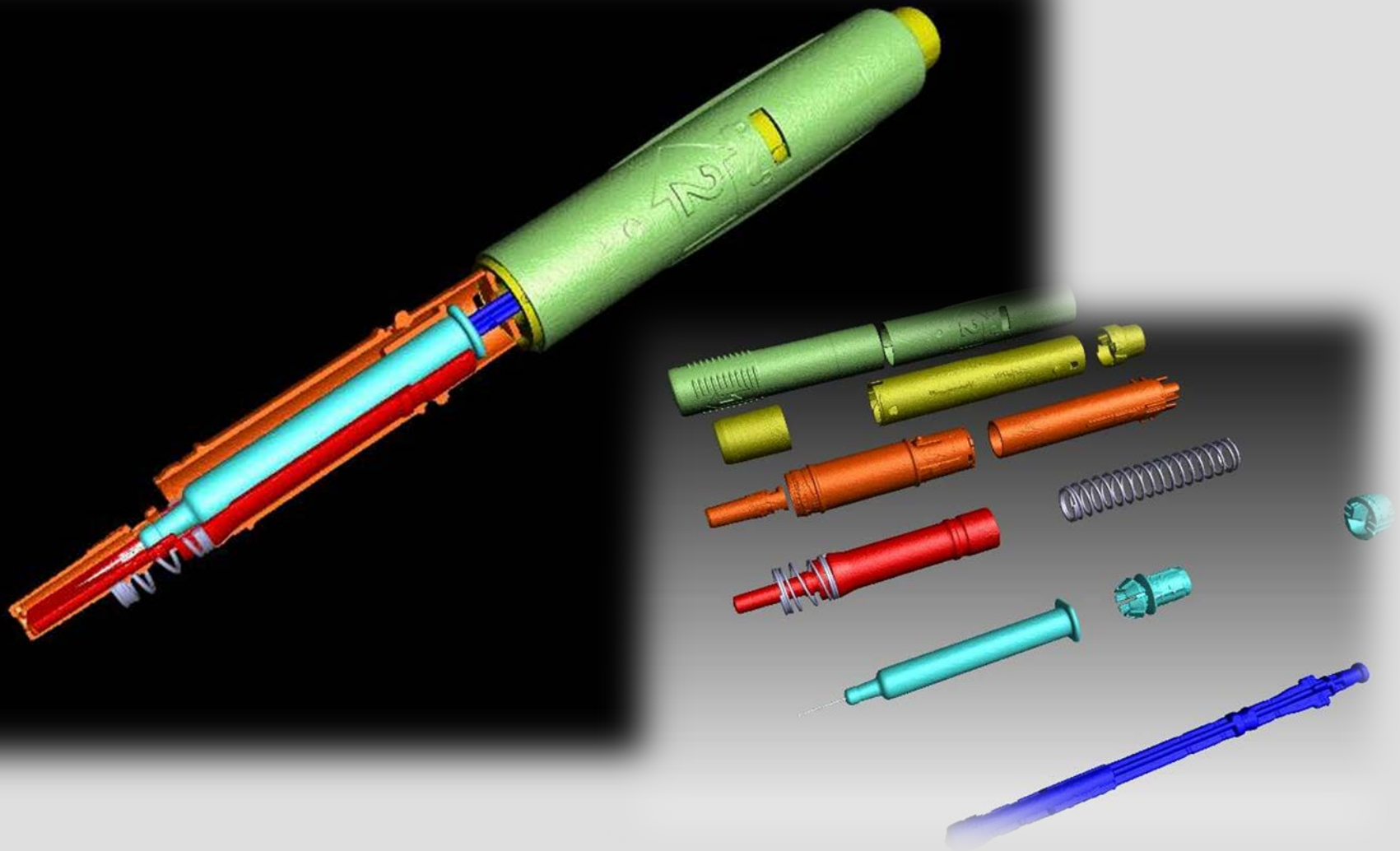
Metrotom

Assembly Analysis: Looking for defects



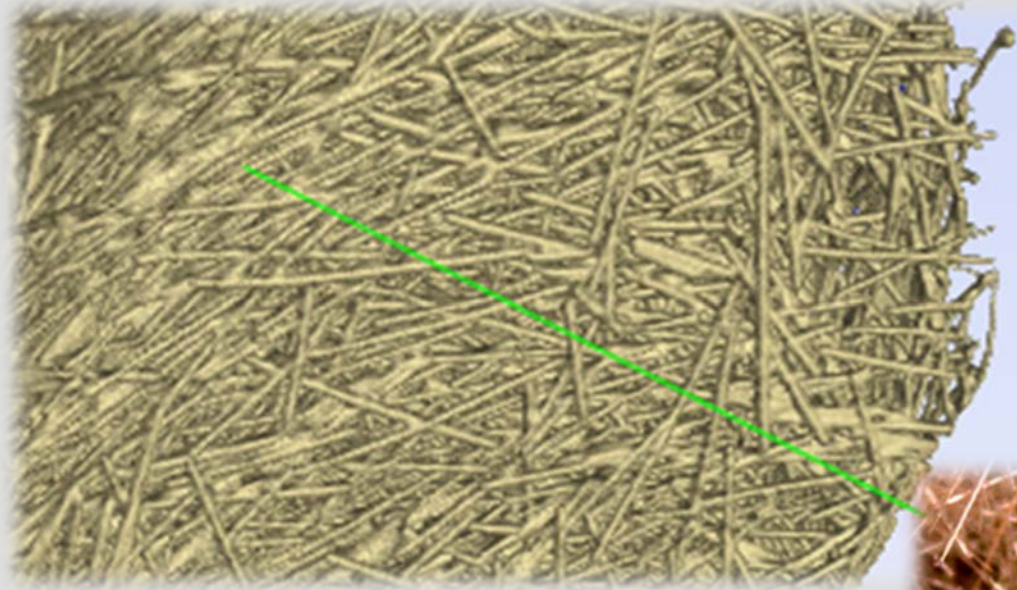
Metrotom

Assembly Analysis: Management Reports



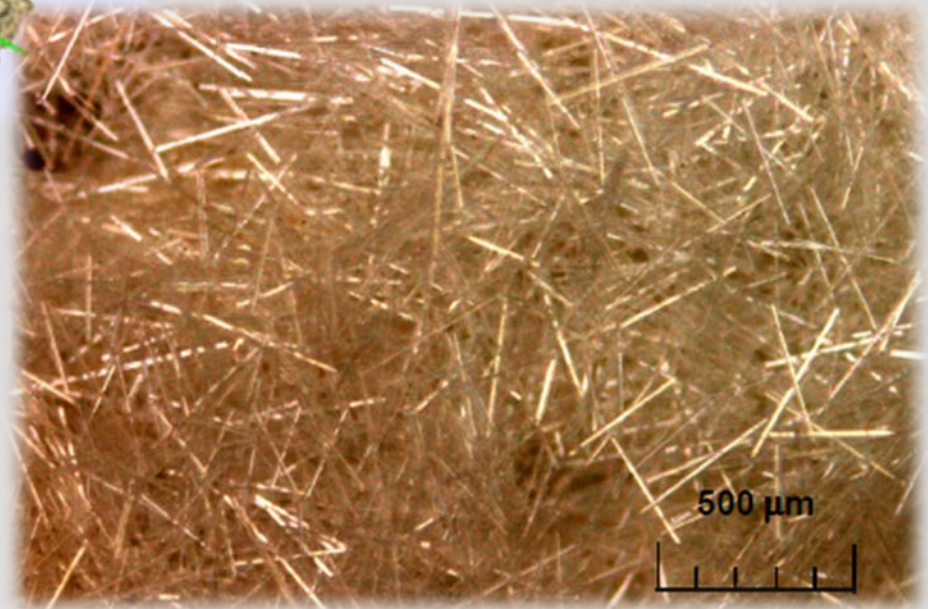
Metrotom

CT versus Microscopy Analysis



CT Scan of Sample

Microscope Image of
Fibers after Ashing
(Burning Out of Plastic)



Metrotom

Material Analysis: Fiber reinforced plastics

