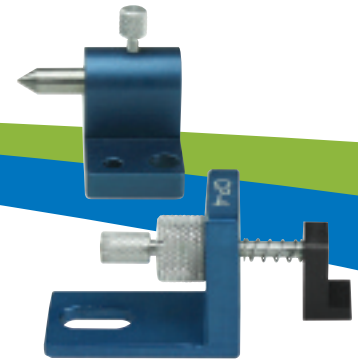
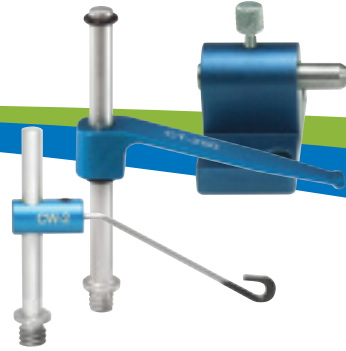




**R&R**  
Fixtures



The R&R Solution. **Everything to Hold Anything.™**  
YOUR SINGLE SOURCE FOR CMM & VISION FIXTURING

## adjustables

### adjustable jack stand

page 1

PART #	PRICE
AJ-50-20	\$40.25
AJ-1-20	\$53.25
AJS-35-8	\$85.00
AJ-19-8	\$45.50
AJ-25-8	\$54.00
AJ-9-4	\$45.00

### adjustable pivot joint

page 1

PART #	PRICE
APJ-20	\$72.00
APJ-8	\$75.00

### adjustable slide

page 2

PART #	PRICE
AS-3-20	\$26.50
ASA-2-20 (acrylic)	\$33.50
AS-1-20	\$25.00
AS-70-8	\$40.50
AS-45-8	\$30.00
AS-30-4	\$28.00
AS-45-4	\$31.00
ASA-45-4 (acrylic)	\$30.00

### micro adjustable V

page 2

PART #	PRICE
AVM-4	\$130.00

### adjustable V post

page 2

PART #	PRICE
AVP-11-20	\$35.00
AVP-2525-8	\$37.00

### adjustable slide acrylic extension

page 2

PART #	PRICE
ASAE-4	\$85.00

### adjustable height stand

page 2

PART #	PRICE
AH-1175-20	\$48.50
AH-2545-8	\$53.25

### adjustable slide mirror

page 2

PART #	PRICE
ASM-4	\$95.00

### adjustable angle plate

page 2

PART #	PRICE
PCA-5023-50-20	\$154.00
PCA-135075-15-8	\$195.00
PCA-135075-10-4	\$175.00

## clamps

### tension clamp

page 3

PART #	PRICE
CT-160-125-20	\$23.00
CT-160-275-20	\$24.00
CT-250-275-20	\$26.00
CT-375-325-20	\$45.00
CT-4P-325-20 *	\$57.00
CT-40-30-8	\$24.75
CT-40-70-8	\$26.75
CT-64-70-8	\$28.00
CT-95-83-8	\$45.00
CT-100P-83-8 *	\$57.00
CT-40-25-4	\$21.50

\*includes plunger

### soft tip tension clamp

page 3

PART #	PRICE
CTT-160-125-20	\$26.00
CTT-160-275-20	\$27.00
CTT-250-275-20	\$29.00
CTT-375-325-20	\$48.00
CTT-40-30-8	\$27.75
CTT-40-70-8	\$29.75
CTT-64-70-8	\$31.00
CTT-95-83-8	\$48.00
CTT-40-25-4	\$24.50

### positional tension clamp

page 4

PART #	PRICE
CPT-250-225-20	\$63.00

### spring wire clamp

page 4

PART #	PRICE
CW-1-1-20	\$26.50
CW-2-2-20	\$31.00
CW-25-25-4	\$28.00
CW-50-50-4	\$32.25

### soft tip spring wire clamp

page 4

PART #	PRICE
CWT-1-1-20	\$28.50
CWT-2-2-20	\$33.00
CWT-25-25-4	\$30.00
CWT-50-50-4	\$34.25

### tension clamp bracket

page 4

PART #	PRICE
CTB-1-20	\$62.25
CTB-25-8	\$63.50

### screw pusher clamp

page 4

PART #	PRICE
CSP-20	\$79.25
CSP-8	\$79.25

### pusher clamp

page 4

PART #	PRICE
CP-20	\$77.00
CP-4	\$77.00

### 3-jaw clamp

page 5

PART #	PRICE
CJ-3	\$367.50
CJ-3-DJ (Delrin jaws only)	\$85.50
CJR-3 (rotating)	\$285.00

### mini vise

page 5

PART #	PRICE
CMV-20	\$250.00
CMV-8	\$250.00
CMV-4	\$250.00

### micro vise clamp

page 5

PART #	PRICE
CVM-20	\$115.00
CVM-B-20 (with base)	\$145.00
CVM-4	\$115.00
CVM-B-4 (with base)	\$145.00

### centers

page 6

PART #	PRICE
CC-6-25	\$184.00
CC-13-50	\$220.00
CC-25-1	\$268.00

### micro center

page 6

PART #	PRICE
CMC-4	\$145.00

### spring pusher standoff clamp

page 6

PART #	PRICE
CSPS-751-20	\$50.00
CSPS-1210-4	\$45.00

### large adjustable pivot clamp

page 6

PART #	PRICE
CAP-2-20	\$350.00
CAP-50-8	\$350.00

### hold down clamp

page 6

PART #	PRICE
CH-350-20	\$72.00
CH-525-20	\$67.00
CH-89-8	\$73.50
CH-133-8	\$69.25

### CMM plate clamp

page 6

PART #	PRICE
CPC-4A	\$42.50
CPC-6A	\$48.00
CPC-4B	\$45.00
CPC-6B	\$51.00



**magnets**

**magnet** page 7

PART #	PRICE
M-50-20	\$28.50
M-75-20	\$31.75
M-1-20	\$41.25
M-125-20	\$50.00
M-13-8	\$29.75
M-19-8	\$32.00
M-25-8	\$42.50
M-32-8	\$52.25
M-6-4	\$27.50
M-13-4	\$33.50

**pin magnet** page 7

PART #	PRICE
MP-50-20	\$57.25
MP-75-20	\$68.50
MP-1-20	\$72.75
MP-13-8	\$63.00
MP-19-8	\$74.75
MP-25-8	\$78.75
MP-6-4	\$59.50
MP-13-4	\$65.00

**V magnet** page 7

PART #	PRICE
MV-50-20	\$63.50
MV-75-20	\$76.50
MV-1-20	\$82.00
MV-125-20	\$99.75
MV-13-8	\$70.75
MV-19-8	\$85.00
MV-25-8	\$89.75
MV-32-8	\$107.00

**V magnet with base** page 7

PART #	PRICE
MVB-50-20	\$106.50
MVB-75-20	\$110.00
MVB-1-20	\$114.50
MVB-125-20	\$131.50
MVB-19-8	\$110.00
MVB-25-8	\$114.50
MVB-32-8	\$131.50

**miscellaneous**

**cone** page 8

PART #	PRICE
RCD-20	\$6.75
RCS-20	\$12.50
RCA-20	\$22.50
RCD-8	\$8.75
RCS-8	\$11.50
RCA-8	\$24.25
RCS-25-8	\$28.50

**resting pin** page 8

PART #	PRICE
RPD-20	\$15.00
RPS-20	\$10.25
RPD-4	\$16.00
RPA-4	\$9.75

**vertical base plate** page 9

PART #	PRICE
PCV-507540-10-4	\$135.00

**corner viewer** page 9

PART #	PRICE
VC-33-20	\$56.25
VC-5050-4	\$47.75

**tooling ball** page 9

PART #	PRICE
STB-50-20	\$65.00
STB-13-8	\$70.00

**T-arm** page 9

PART #	PRICE
AT-20	\$62.00
AT-8	\$62.00

**screws & adapters** page 9

PART #	PRICE
<b>THUMB SCREW</b>	
AATK-20	\$2.25
<b>SCREW</b>	
AATS-14	\$6.00
AATS-20	\$7.75
<b>ADAPTER</b>	
AAS-20	\$7.25
AAS-8	\$8.00
AAS-4	\$8.25

**standoffs**

**standoff** page 10

PART #	PRICE
S-2550-20 *	\$12.50
S-251-20 *	\$13.50
S-37525-20 *	\$11.75
S-37550-20	\$10.25
S-37575-20	\$11.75
S-3751-20	\$12.25
S-5025-20	\$15.00
S-5050-20	\$11.00
S-5075-20	\$10.25
S-501-20	\$10.50
S-502-20	\$11.75
S-504-20	\$15.00
S-506-20	\$18.75
S-7550-20	\$11.25
S-7575-20	\$11.25
S-751-20	\$11.50
S-752-20	\$12.00
S-754-20	\$13.50
S-756-20	\$19.25
S-150-20	\$14.00
S-175-20	\$11.50
S-11-20	\$12.00
S-12-20	\$13.00
S-14-20	\$15.50
S-16-20	\$22.50
S-1501-20	\$19.50
S-1502-20	\$24.50
S-1506-20	\$48.00
S-1315-8	\$11.50
S-1320-8	\$10.75
S-1325-8	\$11.00
S-1350-8	\$11.25
S-13100-8	\$15.50
S-1915-8	\$11.75
S-1920-8	\$11.75
S-1925-8	\$12.00
S-1950-8	\$12.50
S-19100-8	\$14.25
S-19150-8	\$21.00
S-2520-8	\$12.00
S-2525-8	\$12.25
S-2550-8	\$13.50
S-25100-8	\$16.50
S-25150-8	\$23.50
S-3825-8	\$19.50
S-3850-8	\$24.50
S-38150-8	\$48.00

S-65-4 *	\$11.50
S-610-4 *	\$11.75
S-615-4	\$14.00
S-620-4 *	\$12.75
S-625-4 *	\$13.00
S-95-4 *	\$11.75
S-910-4	\$12.00
S-915-4	\$14.25
S-920-4	\$13.00
S-925-4	\$13.25
S-950-4	\$16.25
S-125-4	\$12.25
S-1210-4	\$12.75
S-1215-4	\$15.00
S-1220-4	\$13.50
S-1225-4	\$14.00
S-1250-4	\$17.00

\*no top thread

**Delrin® standoff** page 11

PART #	PRICE
SD-3751-20	\$15.00
SD-501-20	\$14.00
SD-751-20	\$15.25
SD-610-4	\$13.50
SD-910-4	\$15.00
SD-1210-4	\$16.50

**threaded spring post standoff** page 11

PART #	PRICE
S-12-TP-20	\$104.00

**pin standoff** page 11

PART #	PRICE
SP-2550-20	\$14.75
SP-37550-20	\$12.75
SP-501-20	\$15.25
SP-751-20	\$16.75
SP-1325-8	\$16.25
SP-610-4	\$14.25
SP-910-4	\$14.25
SP-1210-4	\$14.25



**Delrin® pin standoff**

page 11

PART #	PRICE
SPD-501-20	\$15.50
SPD-910-4	\$15.50

**2-way & 4-way spring-loaded pin standoff**

page 12

PART #	PRICE
<b>2-WAY PINS</b>	
S-502-2W-20	\$119.00
S-12-2W-20	\$111.25
S-2550-2W-8	\$111.75
<b>4-WAY PINS</b>	
S-502-4W-20	\$107.25
S-12-4W-20	\$101.25
S-2550-4W-8	\$100.75

**rotator standoff**

page 12

PART #	PRICE
SR-11-20	\$65.00

**standoff adapter**

page 12

PART #	PRICE
SA-4-20	\$14.75
SA-6-20	\$25.00
SA-8-20	\$15.00
SA-10-20	\$35.00
SA-10-8	\$35.00
SA-14-8	\$16.75
SA-14-4	\$15.50

**suction cups**

**suction cup**

page 13

PART #	PRICE
CS-5-20	\$60.25
CS-10-20	\$59.50
CS-20-20	\$72.75
CS-30-20	\$79.50
CS-50-20	\$112.00

**exposed suction cup**

page 13

PART #	PRICE
CES-10-20	\$47.00
CES-20-20	\$51.00
CES-30-20	\$59.50
CES-50-20	\$75.75

**V suction cup**

page 14

PART #	PRICE
CVS-5-20	\$78.00
CVS-10-20	\$76.75
CVS-20-20	\$93.25
CVS-30-20	\$119.75
CVS-50-20	\$164.50

**vacuum pump**

page 14

PART #	PRICE
CSVP	\$215.00

**manifold**

page 14

PART #	PRICE
CSM-6P	\$188.00
CSM-10P	\$258.00

**vacuum hose**

page 14

PART #	PRICE
CSH-MP	\$0.18/inch
CSH-MS	\$0.33/inch

**suction cup tray**

page 14

PART #	PRICE
TCS-300200	\$125.00

**towers**

**tower**

page 15

PART #	PRICE
T-16-20	\$130.50
T-112-20	\$167.50
T-1512-20	\$279.00
T-1518-20	\$329.00
T-224-20	\$511.00
T-230-20	\$595.00
T-25150-8	\$147.00
T-25300-8	\$186.00
T-35300-8	\$288.75
T-35450-8	\$351.75
T-50600-8	\$510.00
T-50750-8	\$594.25

**tower block with base**

page 15

PART #	PRICE
TB-751-20	\$64.00
TB-2530-8	\$89.00
TB-1619-4	\$64.00

**trays**

**large component tray**

page 16

PART #	PRICE
TC-560500	\$325.00

**medium component tray**

page 16

PART #	PRICE
TC-500200	\$140.00

**small component tray**

page 16

PART #	PRICE
TC-300190-20	\$140.00
TC-300190-4	\$130.00

**1/4-20 and M8 component tray**

page 16

PART #	PRICE
TC-300200	\$150.00

The right fixture at the right price.™

**XTensions**

PART #	PRICE
XT1-3	\$11.30
XT1-6	\$12.55
XT1-12	\$15.15
XT1-2-6	\$13.75
XT1-2-12	\$17.25
XT1-2-18	\$20.75
XT1-2-24	\$24.30
XT2-6	\$16.95
XT2-12	\$23.70
XT2-18	\$30.45
XT2-24	\$37.20
XT2-30	\$43.95
XT2-36	\$50.70
XT2-42	\$57.45
XT2-48	\$64.20
XT2-60	\$77.70
XT3-24	\$88.15
XT3-36	\$126.55
XT3-48	\$165.00
XT3-60	\$203.30

**economy T-nut** page 18

PART #	PRICE
XT-ET-Nut	\$0.70
XT-3ET-Nut	\$0.71

**pivot T-nut** page 18

PART #	PRICE
XT-PT-Nut	\$7.20

**angle foot** page 19

PART #	PRICE
XT-2AF	\$48.90
XT-2AF-M8*	\$53.75

**angle bracket** page 19

PART #	PRICE
XT-1A-4	\$16.55
XT-2A-4	\$16.55
XT-2A-6	\$20.60
XT-2A-8	\$23.80

**angle gusset** page 19

PART #	PRICE
XT-1AG-4	\$19.75
XT-2AG-4	\$19.75
XT-2AG-8	\$28.00
XT-3AG-4	\$20.90
XT-3AG-8	\$31.00

**joining plate** page 19

PART #	PRICE
XT-JP-6	\$20.60
XT-JP-8	\$25.00
XT-JP-12	\$37.45

**angle brace** page 19

PART #	PRICE
XT-AB-12	\$44.30
XT-AB-15	\$45.60
XT-AB-18	\$47.25

**angle transition** page 19

PART #	PRICE
XT-2AT1-6	\$23.60
XT-2AT3-8	\$29.30

**grid plate** page 20

PART #	PRICE
XT-P-33-20	\$80.20
XT-P-36-20	\$108.75
XT-P-9090-8	\$80.20
XT-P-90165-8	\$108.75

**top plate** page 20

PART #	PRICE
XT-TP-20	\$95.50

**cap screws** page 20

PART #	PRICE
<b>BUTTON HEAD</b>	
XT-BHCS-50	\$0.68
XT-BHCS-63	\$0.29
XT-BHCS-M8*	\$0.68
<b>SOCKET HEAD</b>	
XT-SHCS-50	\$0.43
XT-SHCS-63	\$0.46
XT-LHSCS-M8*	\$0.70

**wrench** page 20

PART #	PRICE
XT-532-TW	\$5.40
XT-532-LW	\$2.50
XT-316-LW	\$2.85

**end cap** page 20

PART #	PRICE
XT-EC-1	\$0.35
XT-EC-1-2	\$0.35
XT-EC-2	\$0.70
XT-EC-3	\$3.20

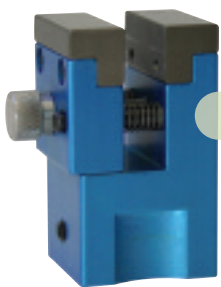
**rotating base** page 20

PART #	PRICE
XT-REB-20	\$154.25

**organizer box** page 20

PART #	PRICE
XT-Box	\$18.00

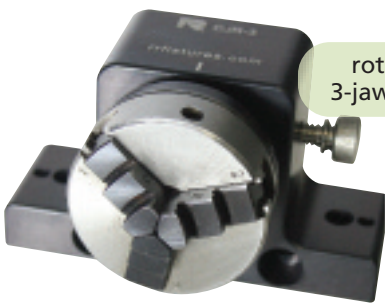
**New components**  
R&R Fixtures. Always innovating.



mini vise



micro vise clamp with base



rotating 3-jaw clamp



micro center



spring pusher standoff clamps



adjustable slide mirror



adjustable slide acrylic extension